

300 LB
WEIGHT CAPACITY

Available
1 Pack

DV8 Steerable Aluminum Knee Walker

790 Steerable Knee Walker, 1/cs

FEATURES:

- Knee walker can be steered for increased maneuverability.
- Ideal for individuals recovering from foot surgery, breaks, sprains, amputation and ulcers of the foot.
- Deluxe dual braking system.
- Aluminum frame is lightweight and durable.
- Tool free height adjustment.
- 8" casters are ideal for indoor/outdoor use.
- Limited Lifetime Warranty.
Lifetime Warranty on brake cable.



DUAL HAND BRAKES FOR ADDED SAFETY

NEW FOLDABLE STEERING COLUMN ALLOWS FOR EASY STORAGE & TRANSPORTATION.

LEG PAD WITH "CHANNEL" PROVIDES ADDED STABILITY AND COMFORT

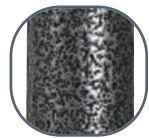
EZ HANDLE HEIGHT ADJUSTMENT

SEAT HEIGHT CAN BE ADJUSTED WITHOUT TOOLS

TILLER CAN BE EASILY FOLDED FOR STORAGE AND TRANSPORTATION

STURDY DUAL FRAME ADDS STABILITY AND DURABILITY

SILVER VEIN FINISH EASY TO MAINTAIN & LESS INSTITUTIONAL LOOKING!



SPECIFICATIONS

Item #	Handle Height (highest)	Handle Height (lowest)	Unit Width	Unit Depth	Knee Pad Height (highest)	Knee Pad Height (lowest)	Pad Width	Pad Depth	Product Weight	Carton Shipping Weight	Weight Limit
790	37.75"	33.5"	17"	31.5"	22"	19"	7"	14.25"	22.75 lbs.	29 lbs.	300 lbs.

Important Notice: Item numbers that display an asterisk () reflect an item that will be discontinued or package change.