

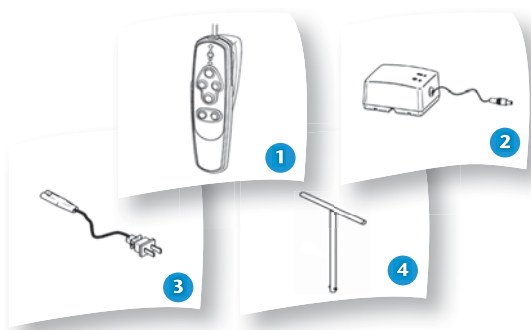
Portable Ceiling Lift V3

The V3 portable track lift combines a solidly engineered design with features you would never expect to find in a portable. Its compact size, folding sling hooks and integrated carry handle make the V3 a breeze to move from room to room.

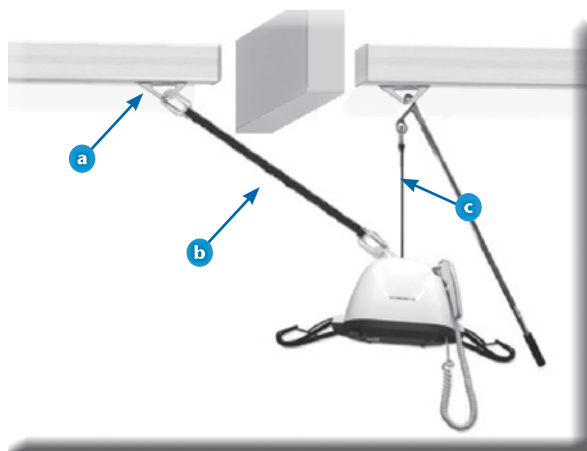
The V3 offers a lifting capacity of : 440 lb (200 kg)



| # Product | Description | Market |
|-----------|-------------|-------------------------|
| 9810001 | V3 - 2 ways | North America |
| 9810008 | V3 - 2 ways | Europe & United Kingdom |



| # Part | Description | 9810001 | 9810008 |
|--------|---|---------|---------|
| 1 | 700.13600 Hand Control - 2 Way | √ | √ |
| 2 | 700.13510 Charging Station | √ | √ |
| 3a | 402.00001 Charger Power Cord - North America | √ | |
| 3b | 402.00003 Charger Power Cord - Europe | | √ |
| 3c | 402.00005 Charger Power Cord - United Kingdom | | √ |
| 4 | 005.16500 V3 - Emergency Lowering Tool | √ | √ |



Features

| | |
|--------------------------------------|----------------------------|
| Weight | 6.35 kg / 14 lb / 1 st |
| Lifting capacity | 200 kg / 440 lb / 31.49 st |
| Soft start & stop movement | |
| Return to charge function on handset | |

Safety Features

| | |
|---|----------------------------|
| Emergency lowering device | Manual |
| Device for emergency stop of the mechanism | Helps to prevent freefalls |
| Current limiter & emergency stopping device | |

Technical Specifications

| | |
|---|-------------------------|
| UL STD 2601-1 / ISO 10535 / CSA C22.2 No. 601.1 - M90 / IEC 60601-1 | |
| Vertical displacement speed | 4.3 cm/sec (1.7 in/sec) |

Battery Specifications

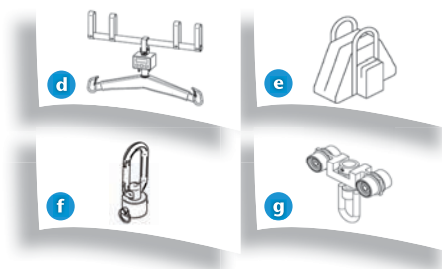
| | |
|--|--------------------------------------|
| Rechargeable sealed lead acid | (2X) 12VDC, 2.3Ah |
| Intelligent & fast charging system | 2 to 4 hrs for complete charge |
| Battery capacity with load of 80 kg / 180 lb / 12.6 st | Up to 30 transfers |
| Low battery disconnect system | Protect batteries from being drained |
| Charge input – 90-240 Vac, 50-60 Hz, 27VA max. | |
| Charge indicator | Visual |

Strap Specifications

| | |
|-------------------------------------|---------------|
| Length | 2,2 m (88 in) |
| Automatically stops unit if twisted | |

Unit Construction

| |
|--------------------------------|
| Frame – steel |
| Cover – fire retardant plastic |



Suggested Slings / Harness / Stretchers

| Total support/ Semi-reclined position | Partial support/ Stand position |
|---------------------------------------|------------------------------------|
| √ Hammock /Hammonk 6 | Band |
| √ Quick Fit | √ Walking |
| √ Hygienic | Total transfer |
| √ Combi | Chest |
| Bariatric | |
| Total support/ Lay-down position | Partial support/ Lay-down position |
| Universal stretcher | Repositioning |
| Morgue | √ Limb sling |

Accessories

| | | |
|----|-----------|--|
| a1 | 700.10650 | Trolley KWIKtrak |
| a2 | A5900 | Trolley BHM track |
| b | 700.03715 | Extension strap - Black |
| c1 | 700.08310 | Reacher 61 cm / 24" |
| c2 | 700.08320 | Reacher 91 cm / 36" |
| d | 700.05720 | Scale Unit and adaptor / 350 kg (770 lb) (North America) |
| e | 002.08150 | Portable lift carry bag |
| f | 700.10950 | Pivoting adaptor for portable |
| g | 700.10620 | Swivel Trolley for portable |